

Elm Street Program

Design

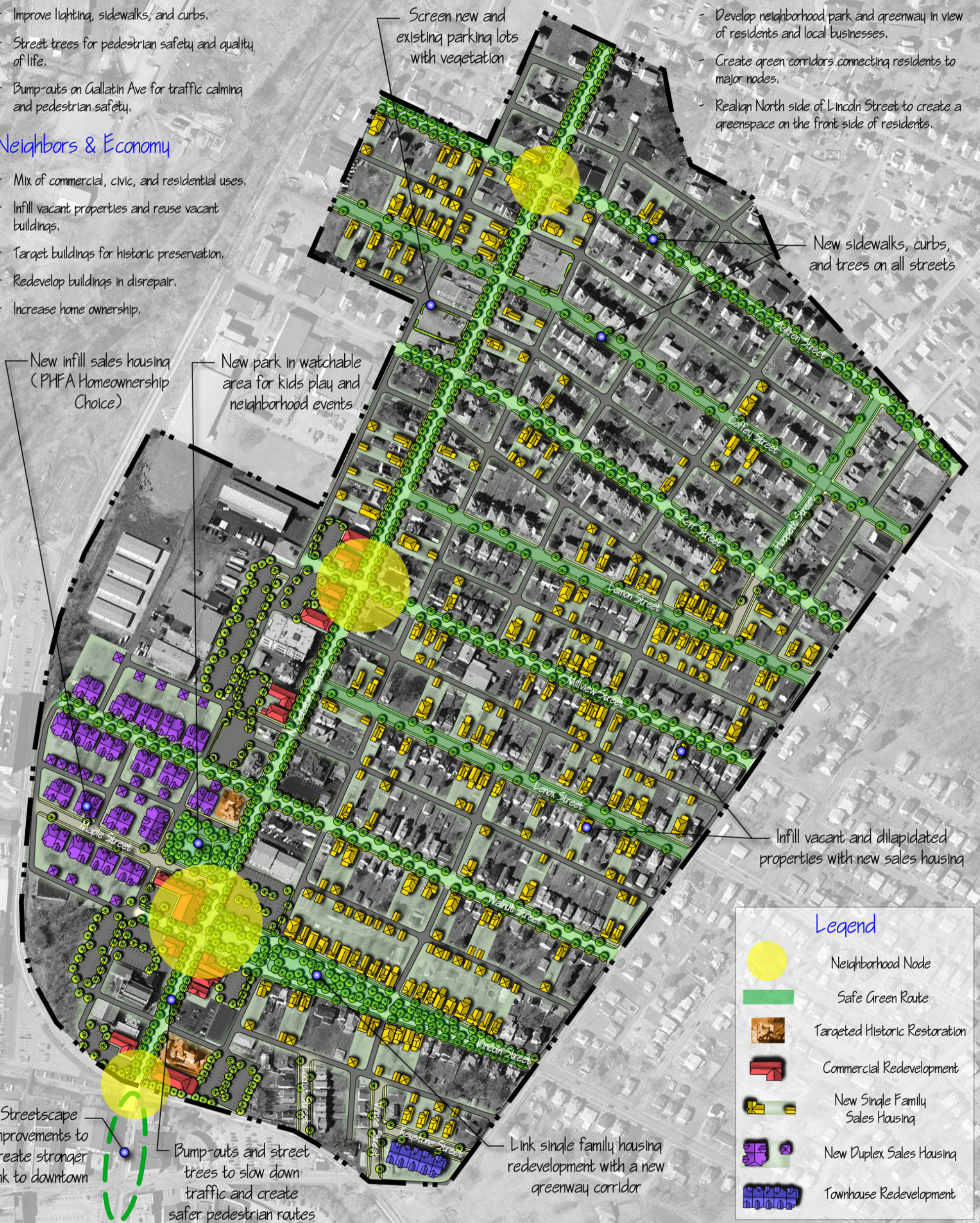
- Improve lighting, sidewalks, and curbs.
- Street trees for pedestrian safety and quality of life.
- Bump-outs on Gallatin Ave for traffic calming and pedestrian safety.

Neighbors & Economy

- Mix of commercial, civic, and residential uses.
- Infill vacant properties and reuse vacant buildings.
- Target buildings for historic preservation.
- Redevelop buildings in disrepair.
- Increase home ownership.

Clean, Safe & Green

- Develop neighborhood park and greenway in view of residents and local businesses.
- Create green corridors connecting residents to major nodes.
- Realign North side of Lincoln Street to create a greenspace on the front side of residents.



New sidewalks, curbs, and trees on all streets

New infill sales housing (PHFA Homeownership Choice)

New park in watchable area for kids play and neighborhood events

Infill vacant and dilapidated properties with new sales housing

Streetscape improvements to create stronger link to downtown

Bump-outs and street trees to slow down traffic and create safer pedestrian routes

Link single family housing redevelopment with a new greenway corridor

Legend

- Neighborhood Node
- Safe Green Route
- Targeted Historic Restoration
- Commercial Redevelopment
- New Single Family Sales Housing
- New Duplex Sales Housing
- Townhouse Redevelopment

